



TRAFFORD COUNCIL

AGENDA PAPERS FOR TRAFFORD COVID-19 PUBLIC ENGAGEMENT BOARD

Date: Wednesday, 17 November 2021

Time: 10.00 am

Place: Virtual meeting:
<https://www.youtube.com/channel/UCjwblOW5x0NSe38sgFU8bKg>

A G E N D A		Pages
1.	ATTENDANCES To note attendances, including officers, and any apologies for absence.	
2.	DECLARATIONS OF INTEREST Members to give notice of any interest and the nature of that interest relating to any item on the agenda in accordance with the adopted Code of Conduct.	
3.	MINUTES To receive and, if so determined, to approve as a correct record the Minutes of the meeting held on 3 rd Nov 2021	1 - 4
4.	UPDATE ON THE CURRENT COVID-19 SITUATION IN TRAFFORD To receive an update from the Director of Public Health	5 - 18
5.	10 POINT PLAN UPDATE (a) Mass Testing To receive a verbal update from the Strategic Testing Lead (b) Contact Tracing and Outbreak Management To receive a verbal update from a Consultant in Public Health (c) Mass Vaccination To receive a verbal update from the Deputy Medical Director, Trafford	

CCG

(d) **Community Engagement**

To receive a verbal update from Regulatory Services

6. **PUBLIC ENGAGEMENT BOARD ACTIVITY**

For all Board Members to provide updates on any activity pertaining to the remit of the Board not covered elsewhere on the agenda

7. **ANY OTHER BUSINESS**

To consider any other items of business not on the agenda which need to be considered by the Board before the next confirmed meeting.

SARA SALEH

Deputy Chief Executive

Membership of the Committee

Council Leader or named Elected Member, nominated leads from opposition parties
VCSE representatives – including specialists relating to key population groups (older people; BAME; children; mental health , Learning Difficulties), Partnerships lead, Communications lead, Director of Public Health, Director of Adult Social Services, Director for Children’s Services, Neighbourhood representatives, Clinical Commissioning Group representative, Trafford Local Care Organisation representative, Healthwatch Representative

Further Information

For help, advice and information about this meeting please contact:

Fabiola Fuschi,

Tel: 07813 397611

Email: Fabiola.fuschi@trafford.gov.uk

This agenda was issued on **15th Nov 2021** by the Legal and Democratic Services Section, Trafford Council, Trafford Town Hall; Talbot Road, Stretford, Manchester, M32 0TH

WEBCASTING

This meeting will be filmed for live and / or subsequent broadcast on the Council’s website and / or YouTube channel <https://www.youtube.com/user/traffordcouncil>

The whole of the meeting will be filmed, except where there are confidential or exempt items.

If you make a representation to the meeting you will be deemed to have consented to being filmed. By entering the body of the Committee Room you are also consenting to

Trafford Covid-19 Public Engagement Board - Wednesday, 17 November 2021

being filmed and to the possible use of those images and sound recordings for webcasting and/or training purposes. If you do not wish to have your image captured or if you have any queries regarding webcasting of meetings, please contact the Democratic Services Officer on the above contact number or email democratic.services@trafford.gov.uk

Members of the public may also film or record this meeting. Any person wishing to photograph, film or audio-record a public meeting is requested to inform Democratic Services in order that necessary arrangements can be made for the meeting. Please contact the Democratic Services Officer 48 hours in advance of the meeting if you intend to do this or have any other queries.

This page is intentionally left blank

Document Pack Page 1
Trafford Covid-19 Public Engagement Board

Wednesday 3rd November 2021 – 10:00 a.m. – Virtual meeting

Present:

Councillor Freeman (Chair)	Executive Member for Covid-19 Recovery and Reform
Councillor Newgrosh	Member of the Health Scrutiny Committee, Trafford Council
Councillor Acton	Chair of the Overview and Scrutiny Committee, Trafford Council
Councillor Blackburn	Ward Councillor, Trafford Council
Councillor Welton	Ward Councillor, Trafford Council
Councillor Akinola	Member of the Health Scrutiny Committee, Trafford Council
Councillor Lloyd	Member of the Health Scrutiny Committee, Trafford Council
Helen Gollins	Consultant in Public Health, Trafford Council
Ellie Caddick	Covid-19 Communications Lead, Trafford Council
Khan Moghal	Chair, Voice of BME Trafford
Dorothy Evans	Voluntary, African Caribbean Care Group
Rebecca Demaine	Associate Director of Commissioning – Primary Care, Trafford CCG
Ben Wilmott	Covid-19 Senior Project Manager, Trafford Council
Kate Murdock	Operations Manager Health, Trafford Council
Andrew Latham	Chief Officer, HealthWatch Trafford
Danny Zammit	Strategic Neighbourhood Engagement Lead, Trafford Council
Kirsty Johnson	Covid-19 Project Manager, Trafford Council
Molly Shaw	Governance Services, Trafford Council
Alexander Murray	Governance Officer, Trafford Council

	Item	Decision / Action	Key Person for Action
1.	Welcome and apologies	Apologies were received from Nigel Smith and Councillor Cordingley.	
2.	Minutes	<p>The Chair asked that Item four within the minutes be amended to have an additional point stating the following; The Board were also advised that Trafford would be advising Care Homes to restrict visits to Care Homes in the Borough to under 16 year olds, owing to the high infection rates among the 4-16 year old cohort, with exceptions for end of life visits or visits undertaken out of doors and that this advice would be reviewed on 1st November.</p> <p>The Board agreed the amendment by the Chair. Following the amendment the board agreed the minutes of the meeting from 20th October as an accurate record.</p>	
3.	Membership	There had been no changes to the Membership since the last meeting.	
4.	Update on the current Covid-19	The Board agreed to note the update.	All

	situation in Trafford	<p>The following messages were shared with the Board:</p> <ol style="list-style-type: none"> 1. The rates across Trafford were decreasing with rates at 456.7 per 100,000; 2. The rates in Trafford were higher than the national average and ranked 119th across England; 3. The rates in over 60s had decreased to 226 per 100,000; 4. Positivity rates were at 12% overall; 5. Hospitalisation rates had seen a small but steady increase; 6. That staff and pupils in secondary schools were still wearing facemasks in schools again and staff and parents were wearing them in Primary schools; 7. People needed to take additional care (even if vaccinated) by avoiding crowded places, meeting people outdoors where possible, wearing a mask, keeping up with hand hygiene, and working from home if able. 	
5.	10POINT ACTION PLAN		
5a.	Mass Testing	<p>The Board agreed to note the update.</p> <p>The following messages were shared with the Board:</p> <ol style="list-style-type: none"> 1. The testing sites in Trafford Park and Partington had changed their opening hours to 08:00 – 18:00; 2. UKHSA had confirmed that only 1 site was affected by false negative tests so to encourage still getting a PCR if necessary; 3. Testing at home twice weekly with Lateral Flow tests should continue; 4. If experiencing symptoms to get a PCR test. 	All
5b.	Contact Tracing and Outbreak Management	<p>The Board agreed to note the update.</p> <p>The following messages were shared with the Board:</p> <ol style="list-style-type: none"> 1. There was no schools currently meeting the outbreak threshold; 2. There were 12 primary schools and 7 secondary schools with cases; 3. 23 workplace settings currently had cases with most only having 1-2 cases; 4. The team had followed up 164 Level 2 cases over the past week with 70% contacted and 55% with full contact tracing completed. 	All

5c.	Mass Vaccination	<p>The Board agreed to note the update. The following messages were shared with the Board:</p> <ol style="list-style-type: none"> 1. The importance of booking your booster and flu jab and to accept the appointment when offered through either your GP or the national booking service; 2. That no Trafford site was accepting walk ins for the booster vaccine, all were appointment only; 3. There was 92,000 people who were eligible for their booster vaccine; 4. All older age care home residents and staff had their booster vaccine by 3rd November; 5. There was strong encouragement for unvaccinated or partially vaccinated people to get their vaccine; 6. The booster vaccine is Pfizer only regardless of which vaccination received on first and second dose; 7. The 12-15 year old vaccination programme has been undertaken in 75% of schools in Trafford and is scheduled to be complete by the end of November; 8. The uptake of vaccination across school age children has been very variable. 	All
5d.	Update and escalations from the COVID-19 Community Engagement Group	<p>The Board agreed to note the update. The following messages were shared with the Board:</p> <ol style="list-style-type: none"> 1. The team had been carrying out engagement work across the community relaying important covid secure messaging and promoting the vaccine; 2. 2 briefing sessions had been held with community champions to assess how the programme was running; 3. 46 people who had not yet had their vaccine had completed a questionnaire to understand reasons for vaccine hesitancy. 	N/A
6.	Public Engagement Board Activity and Feedback	None	
7.	Any Other Business	None	
8.	Date of Next Meeting	Wednesday 17 th November 2021 at 10:00 a.m.	

This page is intentionally left blank

Public Engagement Board

COVID-19 Programme Team

CLT Lead: Helen Gollins, Director Public Health Trafford

17 November 2021

Data surveillance update paper to Public Engagement Board

Report Summary:

This paper provides an update on the current data position for COVID-19 within Trafford and provides comparative information with other GM localities. Data insights into any potential trends are provided based on best available public health information and intelligence available.

Overview of the current position:

Overview

- There were **870** confirmed cases during the week ending Wednesday 10 November, with the highest number of cases (**174**) reported on **Tuesday 09 November**.
- We have seen a decrease in our 7 day case rate to **366.2/100k** from **425.5/100k** in the previous week. Despite seeing a reduction, more recent data suggests a slight increase in our case rate over the coming days.
- Trafford now has the 3rd highest case rate across GM, but remains above the North West (**337.9/100k**) and England (**351.9/100k**) averages.
- Trafford's testing rate has dropped when compared to the previous week (at **514.4/100k** from **585/100k**), whilst our positivity rate has dropped (at **10.3%** from **11%**).

Age Profiles

- Case rates have dropped for most ages when compared to the previous week, however most recent days shows an increase in daily cases for 0-14 year olds and 30-44 year olds.
- Case rates are now highest for 5-9 year olds (**622.1/100k**), increasing above 10-14 year olds (**548/100k**). Most recent data suggests further increases for these ages.

- Case rates for residents aged 60+ have decreased slightly from the previous week (at **203.8/100k** from **224.2/100k**), and we don't expect much change over the coming days. Rates are higher among 60-74 year olds (**246.4/100k**) compared to residents 75+ (**125.3/100k**).
- PCR testing rates remain lowest for residents below the age of 30.

Geography

- Case rates are highest for Trafford's South and West localities – although we are seeing less variation in rates by geography.
- Case rates are highest for the wards of Flixton (**502.7/100k**), Hale Central (**471/100k**), Urmston (**466.9/100k**), and Altrincham (**460.4/100k**).
- Case rates have increased most in Trafford West: Urmston (**+55.9%**) and Flixton (**+35%**).
- The wards of Hale Barns (**-58.9%**), Brooklands (**53.4%**), and Gorse Hill (**-48.1%**) have seen the biggest reduction in their case rate during the most recent week.

Hospital Activity

- There were **166** COVID-19 admissions during the week ending Sunday 07 November compared with **193** COVID-19 admissions during the previous week (*Including Manchester University Foundation Trust, Stockport Foundation Trust, and Warrington & Halton Teaching Hospitals Foundation Trust*).

Public Health Concern

Trafford's case rate reached the highest in the country on 9th October 2021 after peaking at a rate of **846.8/100k** (for the 7 days up to 09 October). Since this time we have seen a steady decline in our rate (currently at **366.2/100k**). Rates have declined most for young persons below the age of 19, whilst our adult population have experienced a steadier decline. However, more recent data suggests that we may see a slight rise in our case rate over the coming days.

Following the drop in our case rate, we have seen a sharp reduction in our testing rate over the past three weeks. We now have similar testing rates to the North West and England averages, whilst still having the highest testing rate across the 10 GM boroughs. We have also seen recent reductions in our positivity rate (at **10.3%** from **11%** in the previous week), dropping below other GM boroughs and currently 6th highest in GM.

Our case rate remains high, above the national and North West average, and much higher than our neighbouring borough of Manchester (**269.6/100k**). We need to halt and reduce our current rate to protect our vulnerable populations, especially those aged 60+ and/or with preexisting health conditions.

The successful roll-out of COVID-19 vaccination, including booster vaccinations has helped weaken the link between infection and hospital admissions/COVID-19 mortality, however there are still 1/5 of eligible residents not vaccinated with at least 1 dose. Despite the successful roll out of the vaccine programme, we have seen inequalities in uptake, specifically linked to decreasing age and geographical areas with highest levels of deprivation. Vaccines offer protection but risk of infection is still present if borough-wide transmission is not controlled.

Although rates have declined over the past few weeks, we recognise that we must not be complacent as a borough and we will continue to focus our efforts on reinforcing COVID-19 secure measures. We will continue to support areas with lower uptake of vaccinations (especially in over 60s) for preventative measures and to improve vaccination uptake.

Outbreak Management and Risk Reduction

Business settings

- We continue to urge all businesses to make their workplaces COVID-19 secure, including ensuring that staff are routinely testing and properly protected when they return to the workplace.
- We continue to promote the importance of COVID-19 vaccinations for all eligible populations.
- We are monitoring the impact of events on COVID-19 rates in the borough.

Health & Social Care Settings

- We need to work together to keep our most vulnerable populations protected. We are managing outbreaks in care homes. While some fully vaccinated staff and residents are testing positive, their disease is much milder than in unvaccinated people.
- Vaccination remains a safe and effective method of protecting yourself from severe illness.
- We will be encouraging all health and social care settings to continue to use all the current infection prevention and control measures to keep staff and service users safe.
- Trafford have recommended that providers pause indoor visiting by children and young people aged 16 and under. Exceptions include end of life visits, and visits that include outdoor socially distanced visits. This enhanced measure was reviewed on 15/11 and the recommendation is that it continues for a further two weeks.

Education & Early Years Settings

- Secondary school pupils should continue with twice weekly LFD testing and all staff/pupils should wear face coverings in communal areas.
- We'd like to encourage people to register negative LFD test results on the national testing portal.
- Any children identified as a close contact should have a PCR test. The Outbreak Team has developed and shared a suite of resources with settings to support them.
- School **household contacts**; children and young people and staff who attend/work in schools and are household contacts should do daily LFD testing for a period of 10 days
- We are continuing to monitor numbers of cases reported through from Early Years settings, fortunately numbers are low, but we would continue to promote vaccination and routine LFD testing.
- We continue to promote the importance of COVID-19 vaccinations for all eligible populations.
- There are currently enhanced measures in Trafford's early years and education settings which includes the wearing of face coverings. This enhanced measure was reviewed on 15/11 and the recommendation is that it continues for a further two weeks.

Contact Officer:

Name: Tom Seery, Public Health Data Surveillance Analyst

Tel: 07929876642

Email: Thomas.seery@trafford.gov.uk

1.0 Vulnerable Population groups

1.1 We have seen case rates decrease slightly in our 60+ population over that the past 7 days, however we do not expect much change over the coming days.

1.2 Table 1 shows that 60+ case rates are highest for Trafford Central and Trafford West. We are seeing weekly fluctuation in locality rates for 60+ residents, however rates have stayed highest in Trafford Central over the past two weeks.

Table 1. Case count and incidence per 100,000 population by ethnicity

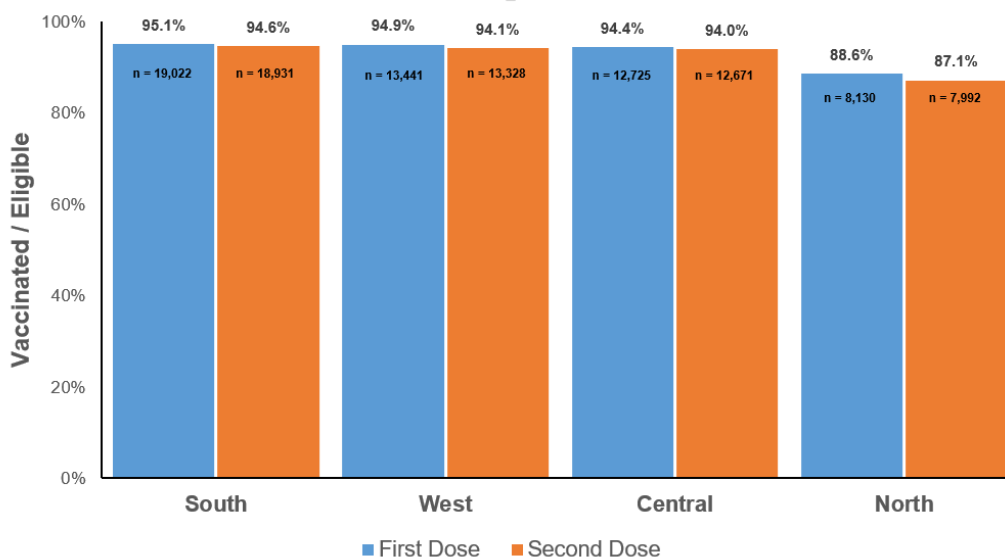
Trafford, 27 October to 10 November 2021

	Previous Week	Current Week	Percentage Change
Central	283.9	245.6	-13.5
West	162.0	243.0	50.0
South	232.2	165.1	-28.9
North	200.8	153.5	-23.5

1.3 Vaccine uptake (first dose and both doses) is high among our 60+ population, however we are seeing variation between our 4 localities.

1.4 Between localities with the highest and lowest uptake, we are seeing a percentage gap of 6.5 for first dose uptake, and 7.5 for second dose uptake.

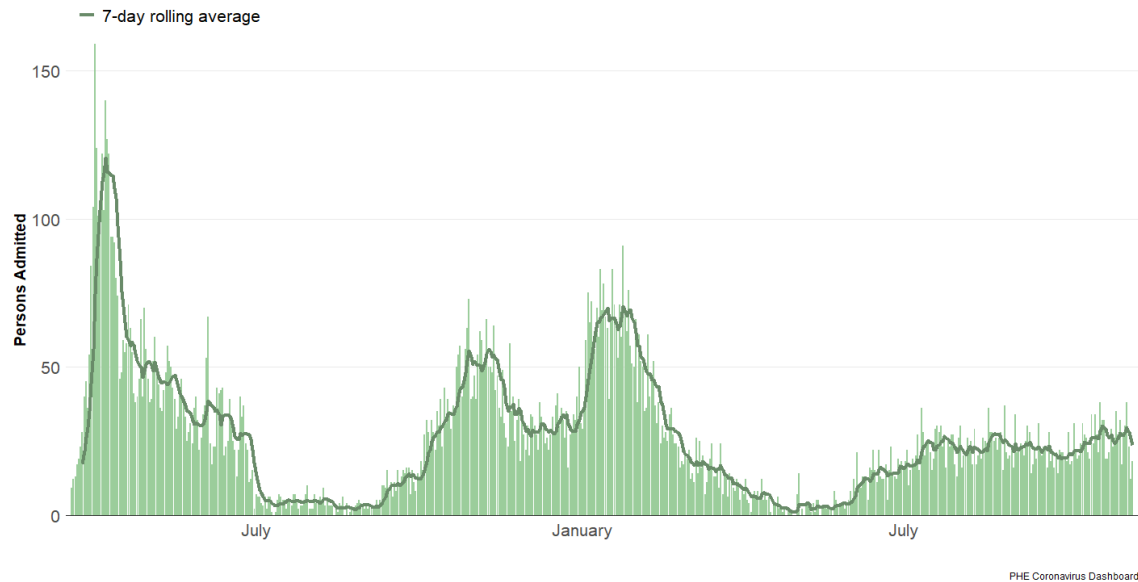
Figure 1. First and Second dose uptake for residents aged 60 years and over Trafford, up to 08 November



1.5 COVID-19 hospital admissions have decreased over the past week - following a 3 week period where we were seeing slight increases.

1.6 We will continue to monitor any week-by-week changes.

Figure 2. Daily Count of COVID-19 Hospital Admissions (including *Manchester University Foundation Trust, Stockport Foundation Trust, and Warrington & Halton Teaching Hospitals Foundation Trust*).
19 March 2020 to 07 November 2021



2.0 Trend of COVID-19 cases within Trafford

2.1 Case rates remained volatile throughout the month of August and early September, but we started to see a steady rise in cases after mid-September.

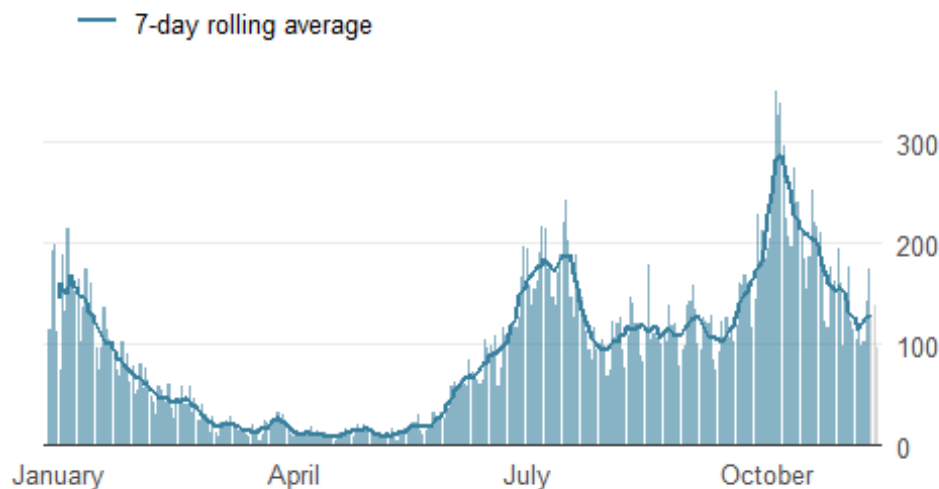
2.2 Daily positive cases spiked in early October, exceeding 300 daily cases and leading to a 7-day case rate greater than **800/100k**.

2.3 Our case rate peaked at a rate of **846.8/100k** for the 7 days up to October 9th, and reached highest in the country.

2.4 Case rates dropped throughout the month of October, however most recent days shows a slight increase in the number of daily cases, indicating that our rates are levelling-off.

Figure 3. Epidemic curve of daily confirmed new cases

Trafford, 28 December 2020 to 12 November 2021



3.0 Age profiles

3.1 When compared to the previous week, case rates have dropped for most ages, however recent data shows a slight increase in daily cases for all age groups.

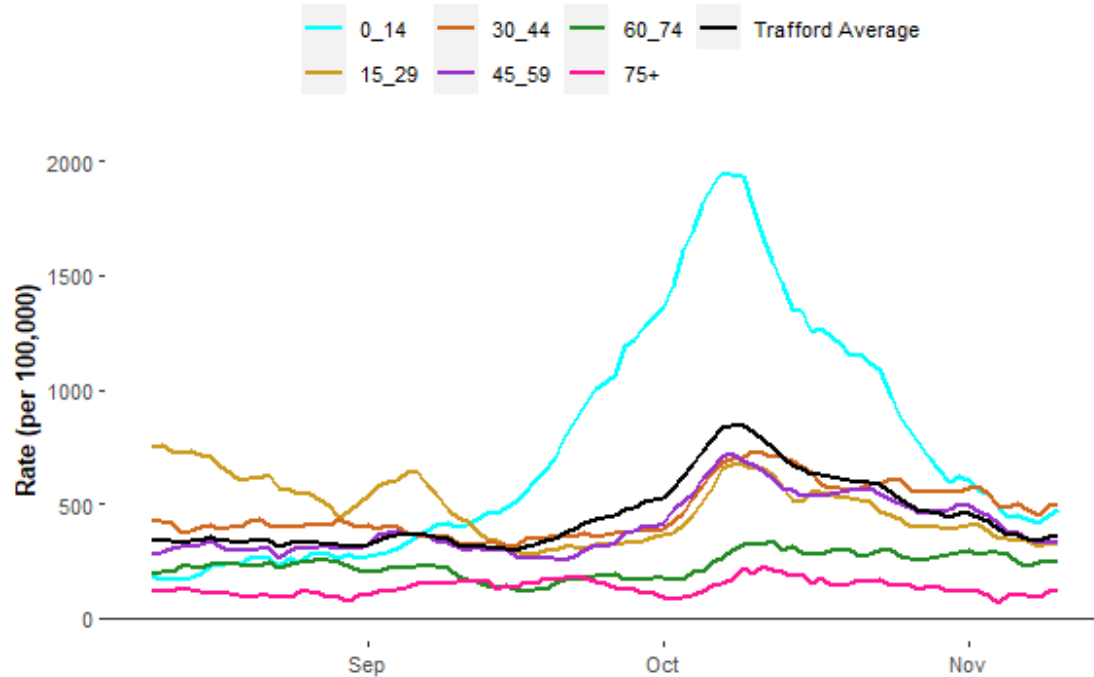
3.2 Case rates remain highest for 30-44 year olds (**504.4/100k**), followed by 0-14 year olds (**473.3/100k**).

3.3 Case rates for 60+ residents have dropped slightly from the previous week (at **203.8/100k** from **224.2/100k** in the previous week).

3.4 Case rates are higher for 60-74 year olds (**246.4/100k**) when compared to residents aged 70+ (**125.3/100k**).

Figure 4. Age-specific case rates per 100,000 population Trafford, 7-day moving average)

Trafford, 12 August 2021 – 10 November 2021



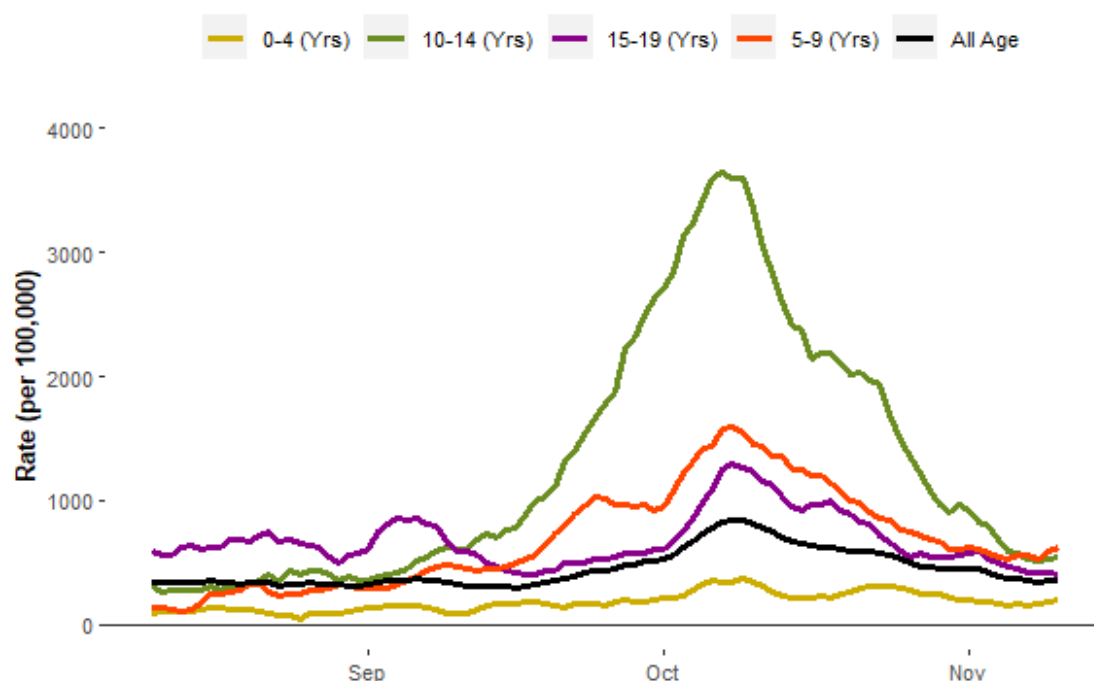
3.5 Among young persons below the age of 20, case rates are now highest for 5-9 year olds, increasing from the previous week (at **622.1/100k** from **579.8/100k** in the previous week).

3.6 Case rates have dropped for 10-14 year olds when compared to the previous week, however most recent data suggests that rates are starting to increase for this age group.

3.7 We aren't seeing rates increase for young people aged 15-19.

Figure 5. School case rate per 100,000 residents (7-day moving)

Trafford, 12 August to 10 November 2021



4.0 Geographical spread of COVID-19 in Trafford

4.1 Case rates are highest in Trafford West and Trafford South, however we are seeing less variation in rates by geography.

4.2 Case rates have dropped for the majority of wards (17/21).

4.3 Case rates are highest for the wards of Flixton (**502.7/100k**), Hale Central (**471/100k**), Urmston (**466.9/100k**), and Altrincham (**460.4/100k**).

4.4 Case rates have increased most in Trafford West: Urmston (**+55.9%**) and Flixton (**+35%**).

5.0 PCR Testing

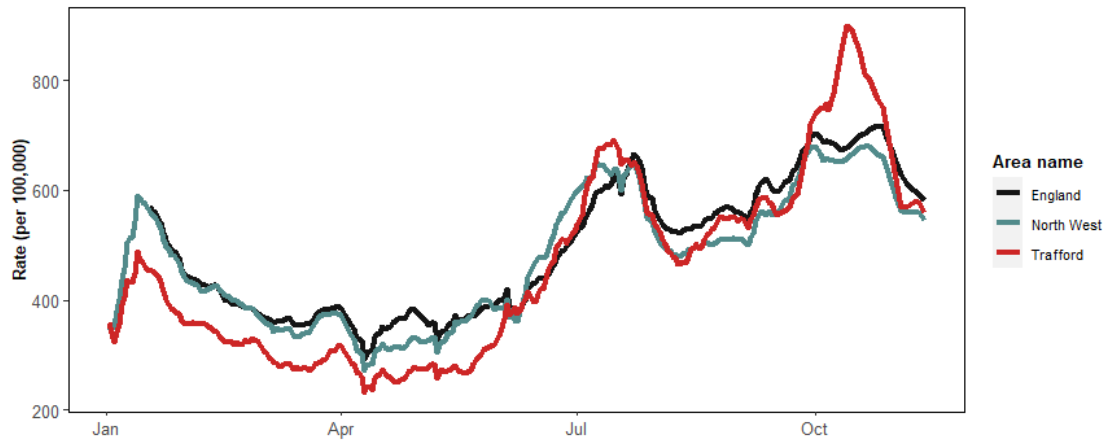
5.1 Trafford's testing rate peaked on October 10th, carrying out 900 daily tests per 100,000 residents, well above the England and North West averages.

5.2 We have seen a sharp reduction in testing since early October, and more recently resembling the testing rates of the North West and England averages.

5.3 Trafford’s testing rate remains highest across the 10 GM boroughs.

5.4 Trafford’s daily testing rate sits at **514.4/100k** which is a reduction from the previous week (**585/100k**). Trafford’s testing rate is below the England average (**559.6/100k**).

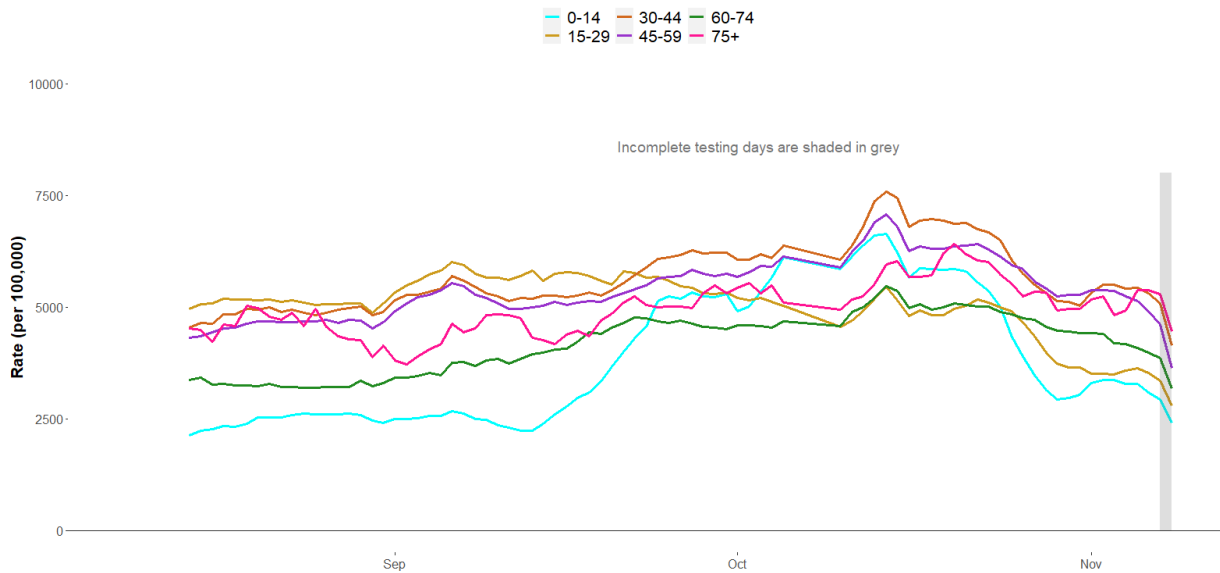
Figure 6. Daily testing rate (7-day average): England, North West, & Trafford
Trafford, 01 January to 08 November 2021



5.5 Testing rates are highest for residents aged 75+, followed by 30-44 year olds.

5.6 Testing rates remain lowest for residents below the age of 30. We are yet to see testing rates increase for 0-14 year olds.

Figure 7. Age-Specific Testing rate per 100,000 residents (7-day moving)
Trafford, 14 August to 08 November 2021



Source: Data from PHE COVID-19 Situational Awareness Explorer

6.0 Positivity

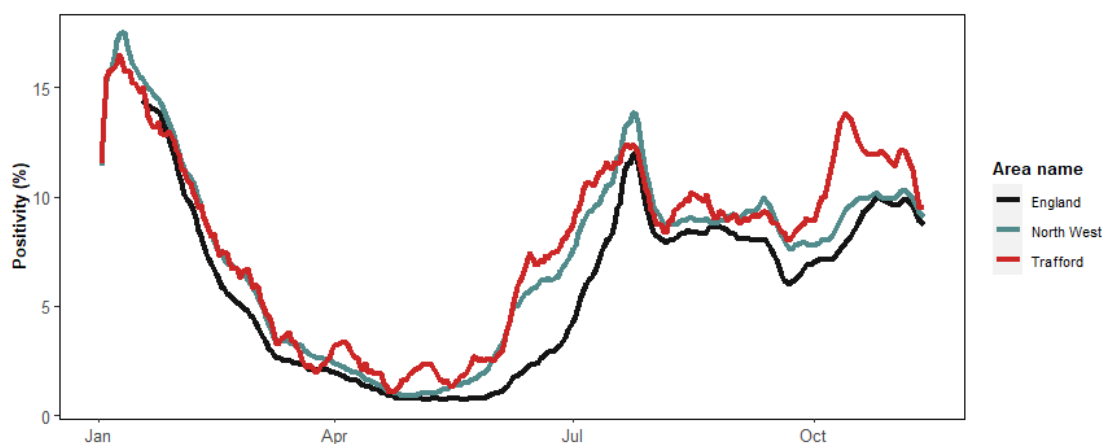
6.1 We have seen a reduction in Trafford's positivity rate over the past 3 weeks, but most recent data shows that our positivity rate is levelling-off, at **10.3%**.

6.2 Our positivity rate remains above the North West and England average, and is 6th highest across the 10 GM boroughs.

6.2 Trafford's 7-day positivity rate sits at **10.3%** which is a decrease from the previous week (**11%**). Trafford's positivity rate is above the England (**9.2%**) and North West averages (**9.4%**).

Figure 8. 7-day Positivity rate: England, North West, & Trafford

Trafford, 01 January to 08 November 2021



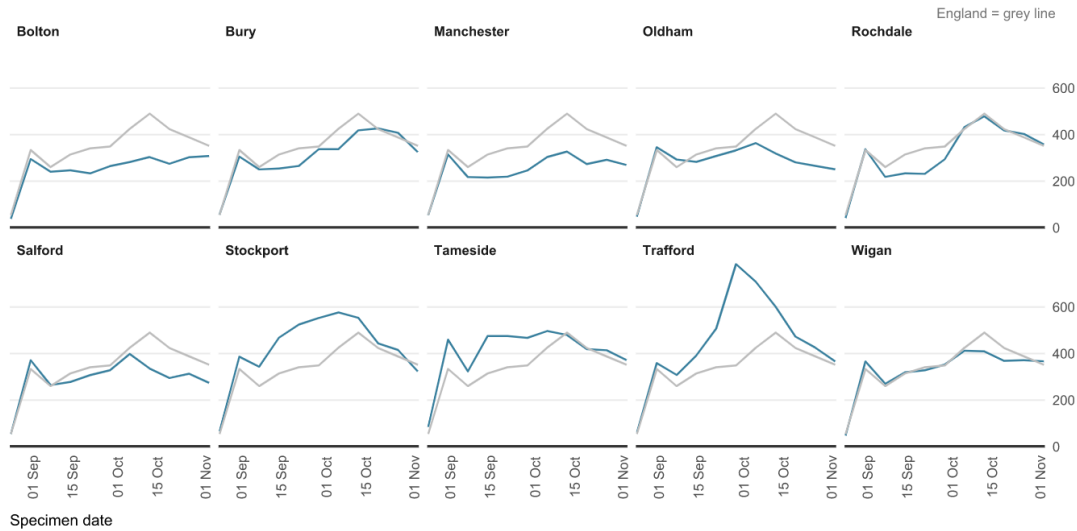
7.0 Comparative data of COVID-19 cases within the local authorities of Greater Manchester

7.1 Trafford saw the sharpest rise in its case rate throughout September and October, followed by Stockport.

7.2 Case rates are stable or are falling for most boroughs.

7.3 Trafford has the 3rd highest case rate across the GM boroughs, although similar to the case rates of Tameside (**371.6/100k**), Wigan (**366.8/100k**), and Rochdale (**358.1/100k**).

Figure 9. Weekly incidence per 100,000 population by local authority
Greater Manchester, 04 September to 10 November 2021



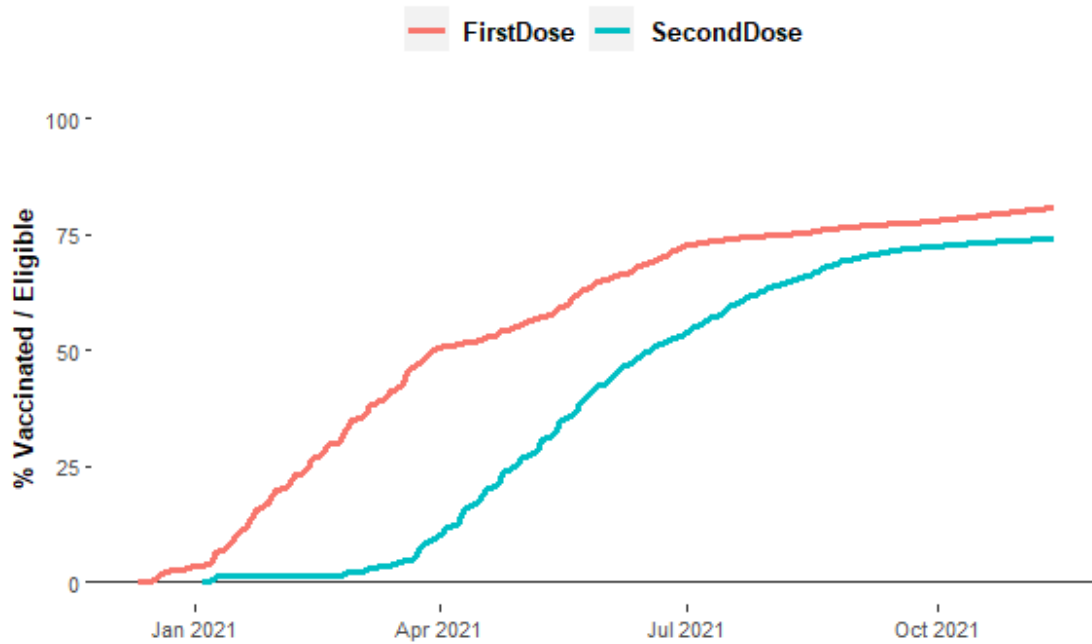
8.0 Vaccinations

8.1 The total percentage of Trafford residents (Aged 12+) administered their first vaccine dose on **Saturday 13-11-2021** was **80.7%** (increasing by **0.3%** from the previous week).

8.2 The total percentage of Trafford residents (Aged 12+) administered both vaccine doses on **Saturday 13-11-2021** was **74.1%** (increasing by **0.2%** from the previous week).

Figure 10. Running total of first and second dose vaccines for Trafford residents (12 years and above)

Trafford, 09 December to 13 November 2021



Source: COVID-19 Situational Awareness Explorer

8.3 Vaccine uptake is lowest in Trafford North (71.2%) and highest for Trafford South (84.6%) among all eligible residents above the age of 12.

This page is intentionally left blank